



CATS

Proposed Changes to Canton Fixed Routes 100 & 200

Proposed Changes to Canton Fixed Routes 100 & 200

Route 100

Stops being removed

- #133 - Chevron Hickory Flat Highway & Marietta Rd.

Stops that are going from Route 200 to Route 100

- #1030 - Jefferson Circle @ Shelter
- #1040 - Crisler St & E. Main St.
- #1050 - Shipp St. @ Shelter
- #1060 - Shipp St @ Main St.

Route 200

Stops being removed

- #202 - East Marietta & Main Street
- #205 - Jefferson Circle @ Stop sign
- #209 - Hasty Elementary School
- #211 - Waffle House / IHOP (Replace when construction is finished).
- #216 - Colonial Village
- #218 - Ridge Pine Office Park

Stops that are going from Route 100 to Route 200

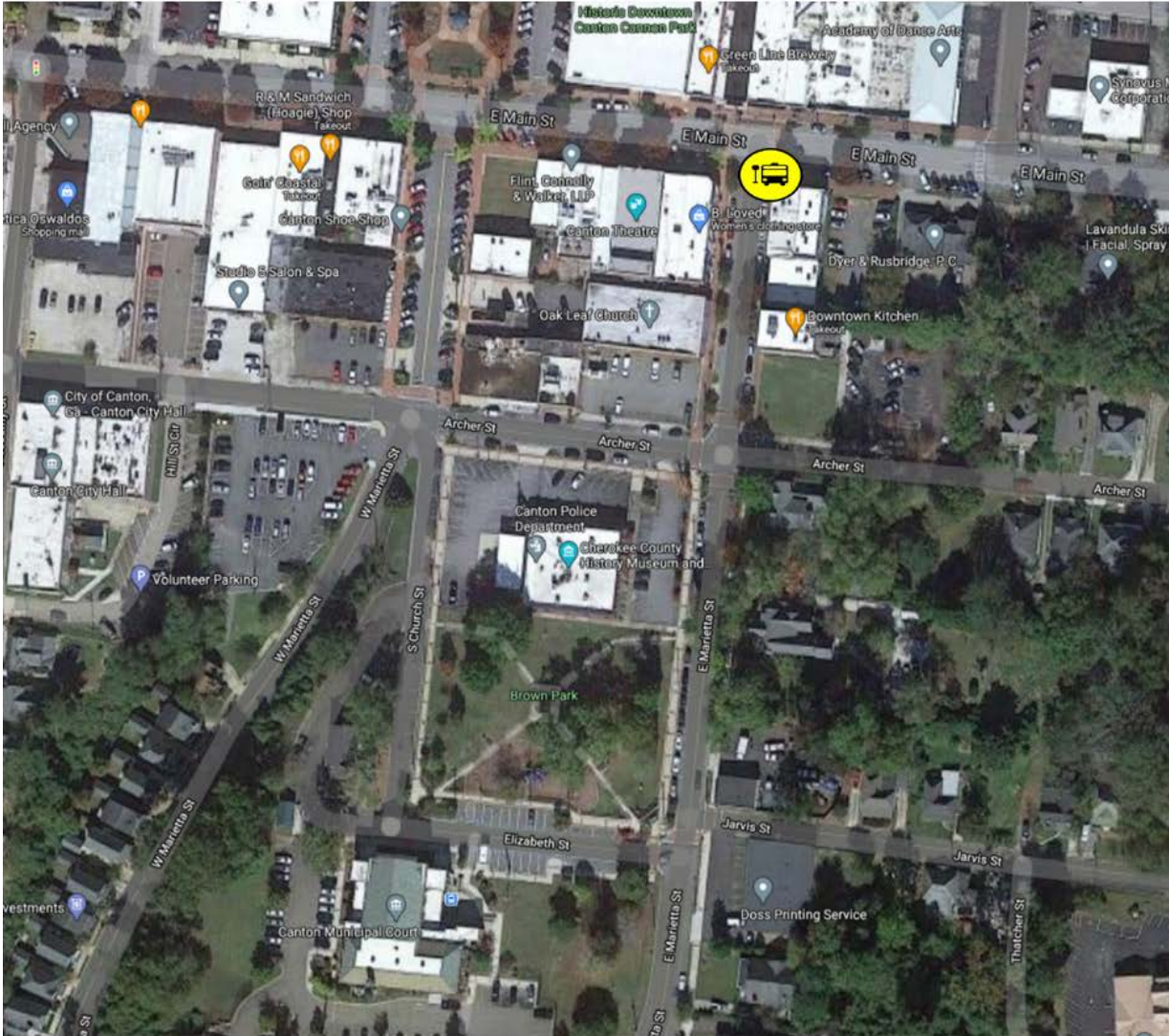
- #2080 - Cherokee Overlook Sub-division & Exxon
- #2090 - Hillcrest Sub-division & Hwy 140
- #2100 - 495 Hwy 140 @ Cherokee Professional Bld.
- #2110 - Laurels @ Greenwood Apts.

#133 Chevron Hickory Flat Highway & Marietta Rd.



- Yellow Dot – Stop location
- Current Route – Route 100
- Details – This stop is being removed due to it's within walking distance of two stops and has a low volume of ridership. Passengers will be able to utilize either #2010 Canton Village or #2020 Marietta Road & Edwards Street Stop.
- Justification – Lower ridership and within walking distance of two stops.

#202 East Marietta & Main Street



- Yellow Dot – Stop location
- Current route – Route 200
- Details – This stop is being removed due to the low volume of ridership and is within walking distance of #1000 / #2000 Canton Police Department.
- Justification – Low ridership and within walking distance of Canton Police Dept.

#205 Jefferson Circle @ Stop Sign



- Yellow Dot – Stop Location
- Current Route - Route 200
- Details – This stop is being removed due to the low volume of ridership and is within walking distance of the #1030 Jefferson Circle @ Shelter stop.
- Justification – Low ridership and is within walking distance of another stop.

#209 Hasty Elementary School



- Yellow Dot – Stop location
- Current Route – Route 200
- Details – This stop is being removed due to the low volume of ridership and that it is within walking distance of two stops. Passengers can use either #2040 Etowah Industrial Ct. or #2050 MUST Ministries /Library/DDS stops.
- Justification - Low Ridership and within walking distance of two stops.

#211 Waffle House/ IHOP



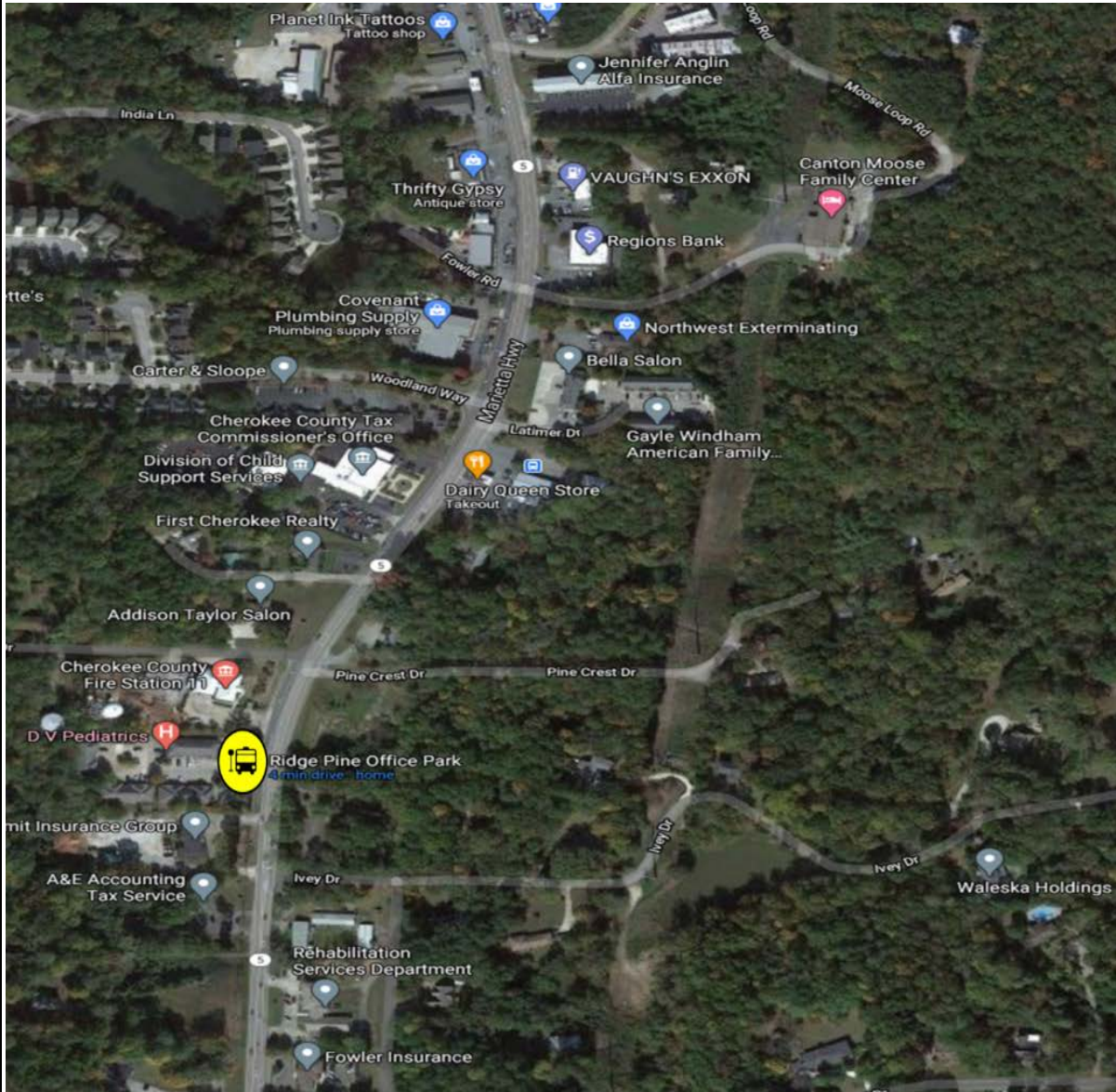
- Yellow Dot – Stop location
- Current Route – Route 200
- Details – This stop is being removed due to the amount of construction and having low volume of ridership. Passengers will be able to utilize #2060 DICKS Sporting Goods stop. Once construction is completed we can replace this stop at a more convenient and safer location.
- Justification – Safety and low volume of ridership.

#216 Colonial Village



- Yellow Dot – Stop location
- Current Route – Route 200
- Details – This stop is being removed due to low volume ridership. Passenger can utilize #2190 Cherokee South Apt. (Latimer St.& Dairy Queen).
- Justification – Low ridership

218 Ridge Pine Office Park



- Yellow dot – Stop location
- Current Route – Route 200
- Details – This stop is being removed due to low ridership. Passengers will be able to utilize #2190 Cherokee South Apt. (Latimer Street & Dairy Queen) or #2160 Chamber of Commerce.
- Justification – Low ridership

Proposed Changes to Canton Fixed Routes 100 & 200

Route 100

- #1290 – Marietta Hwy & Northwood Apartments
- #1240 – Riverstone Pkwy @ Longhorns & AMC
- #1230 – Spring St. (Across From Hampton Inn)

Route 200

- #2010 – John T Pettit Street
- #1270 – The 100 route wants to add new Shoal Creek Road stop
- #2040 – Etowah Industrial Ct.
- #2160 Chamber of Commerce

#2010 – John T Pettit Street

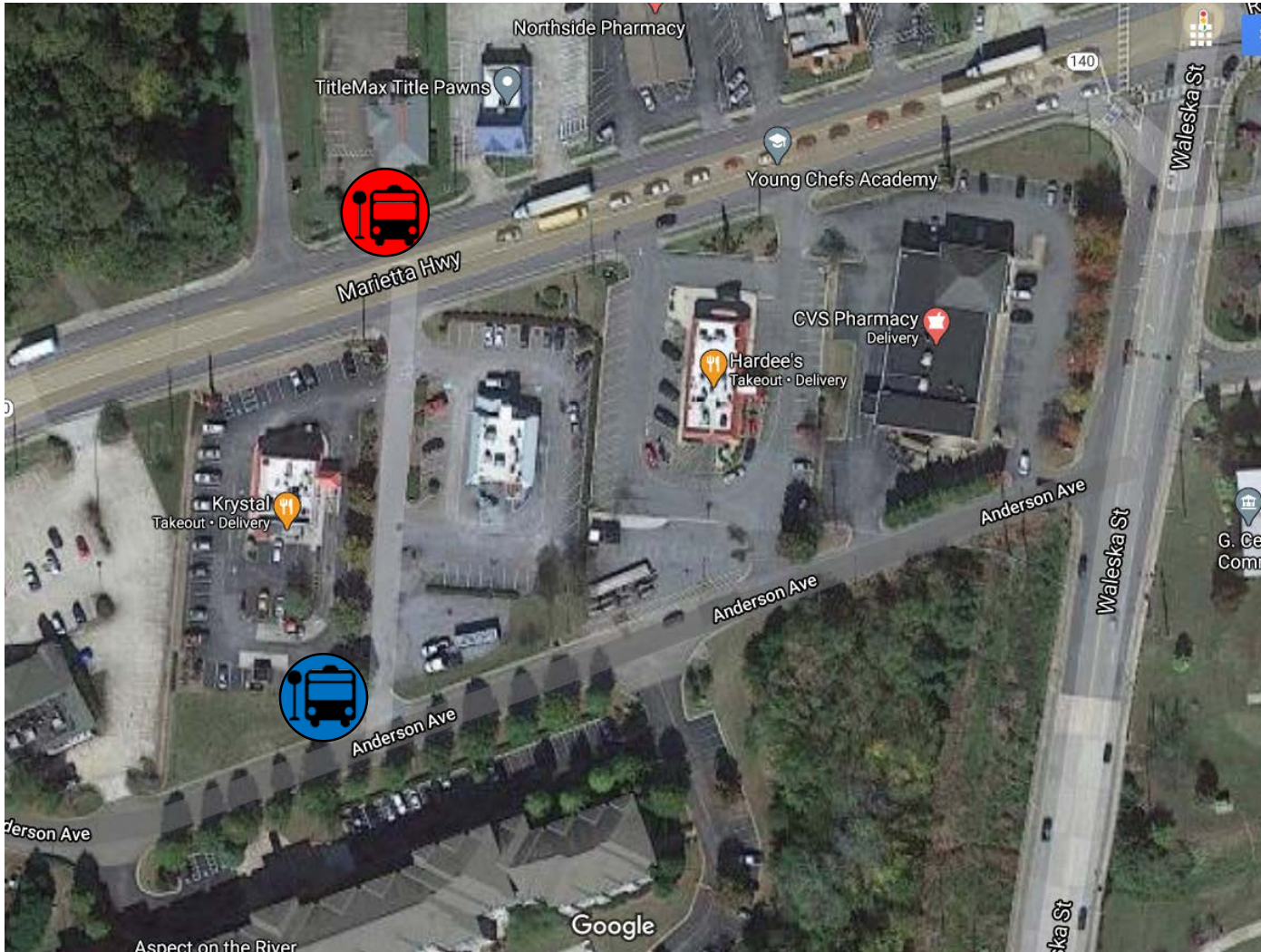


- Red Dot – Current Location
- Blue Dot – Proposed Location
- Details – If you look where this stop is currently located we are stopping at an intersection, which is a major safety issue. By moving this stop to the blue dot, the Cats bus will be able to pull completely out of traffic to make the stop.
- Justification: Safety

Additional Photos - #2010



#1290 – Marietta Hwy & Northwood Apartments

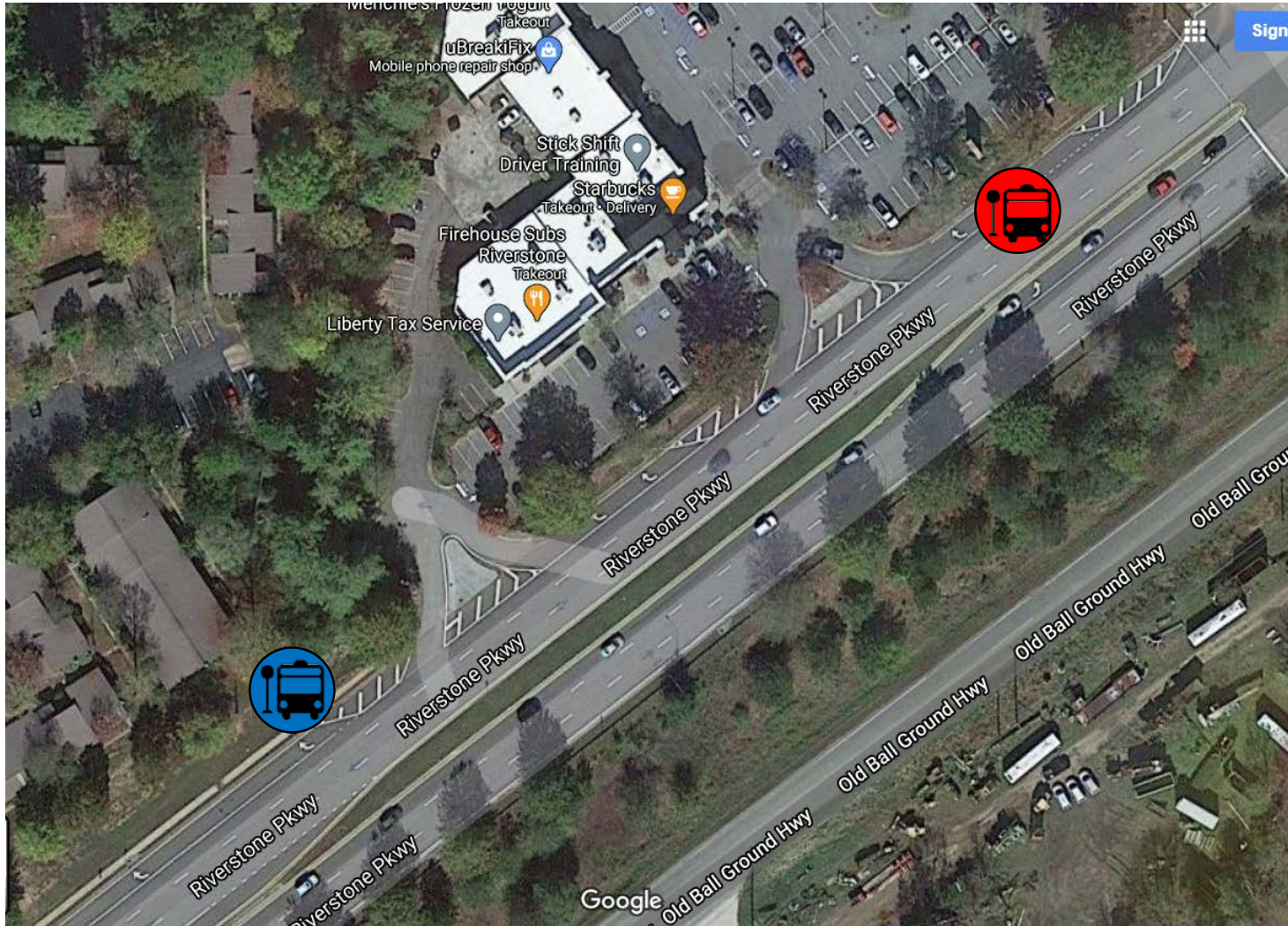


- Red Dot – Current Location
- Blue Dot – Proposed Location
- Details – This area on Marietta Hwy, which is a heavily traffic area and once again we are having to stop at an intersection. We wish to move across the street to a much lower traveled area, at the corner of Anderson Ave and the cut through road behind Krystals.
- Justification: Safety

Additional Photos - #1290



#1240 – Riverstone Pkwy @ Longhorns & AMC



- Red Dot – Current Location
- Blue Dot – Proposed Location
- Details – This stop is located right after a three way traffic light, and we have to pull over in turning lane. This also creates a problem for people turning right at the light, as we are in their travel path. Moving to proposed location is a much less traveled area and much safer for pedestrians and vehicles.
- Justification: Safety

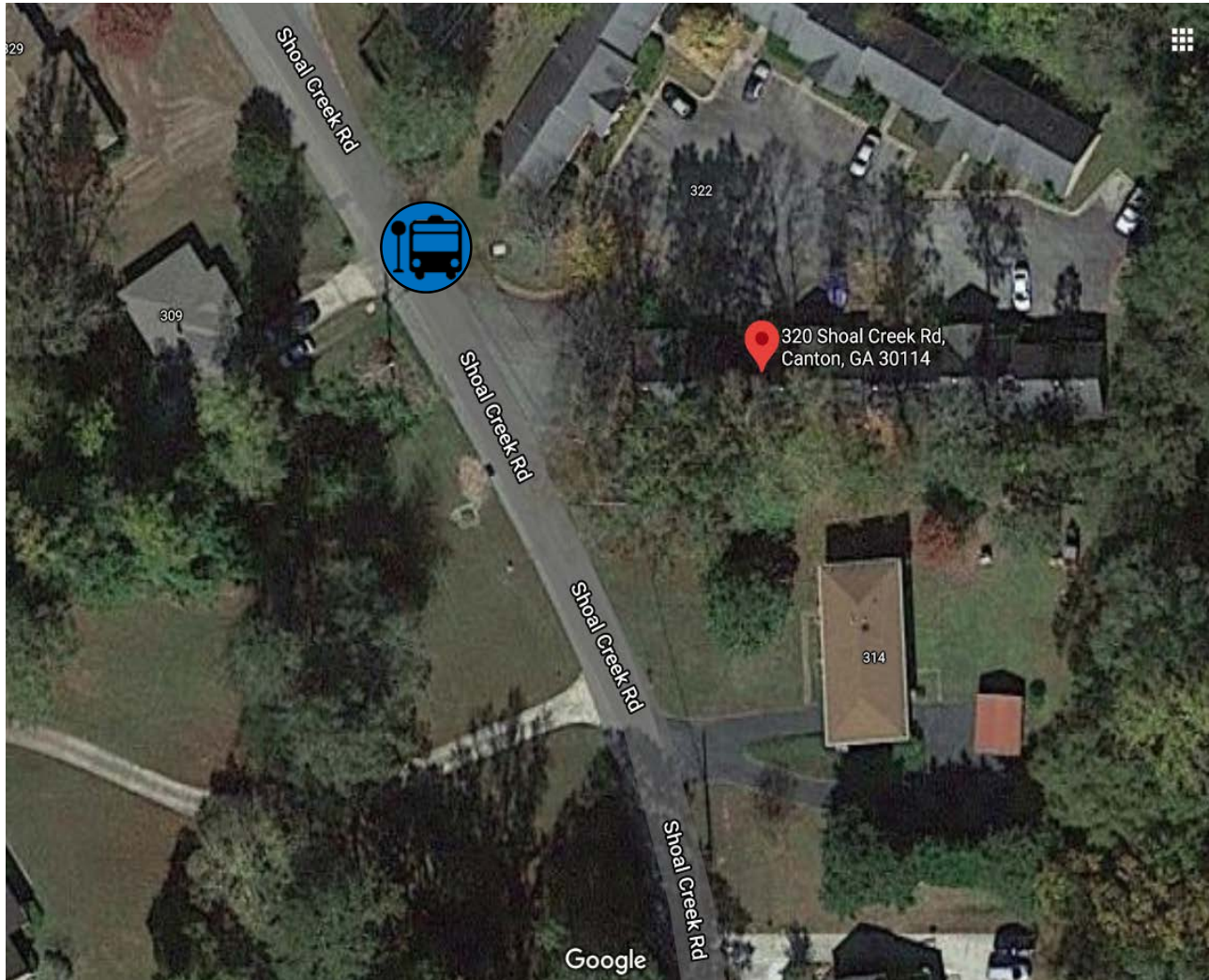
Additional Photos - #1240



Additional Photos - #1240

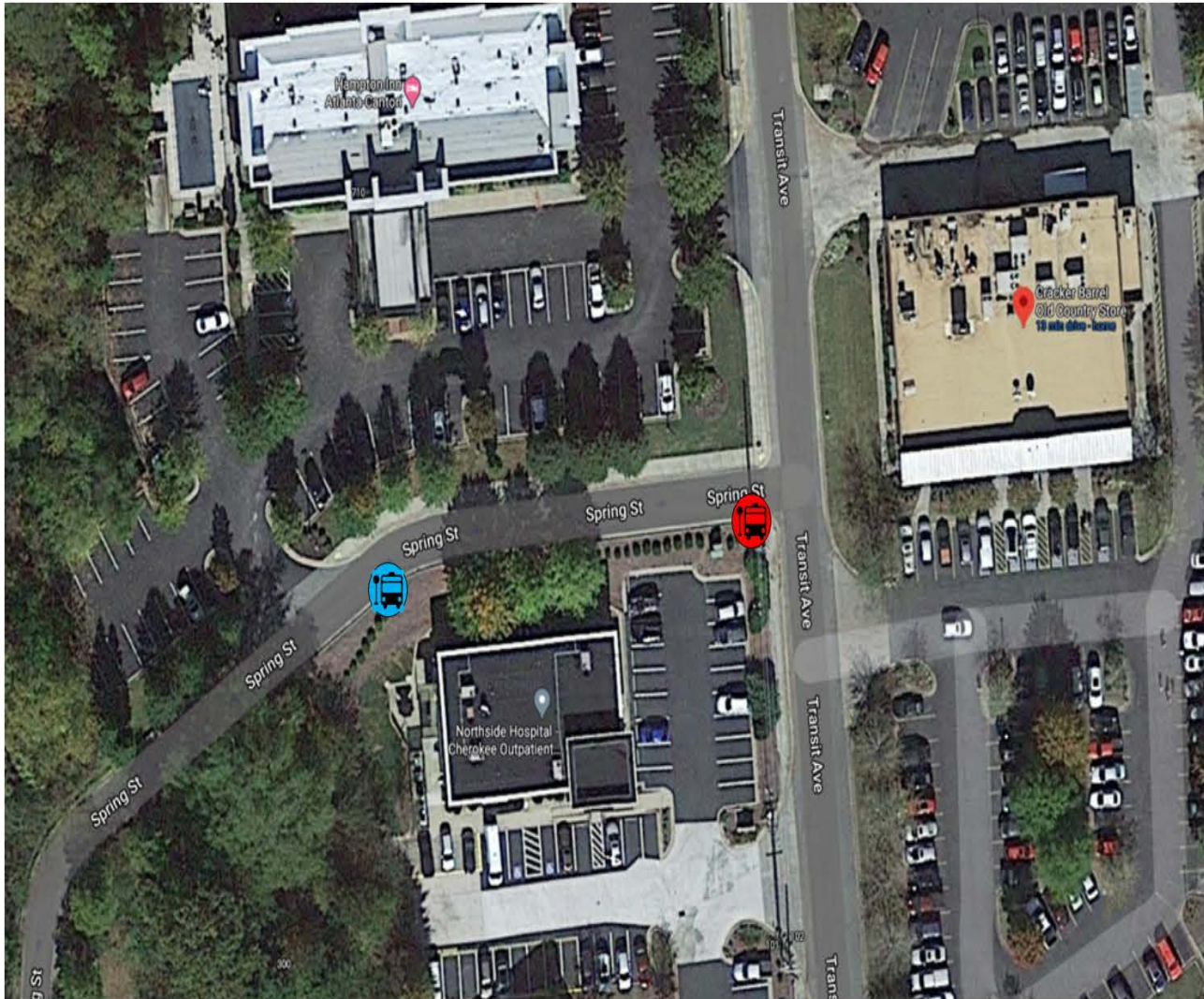


TBD – Shoal Creek Road (New)



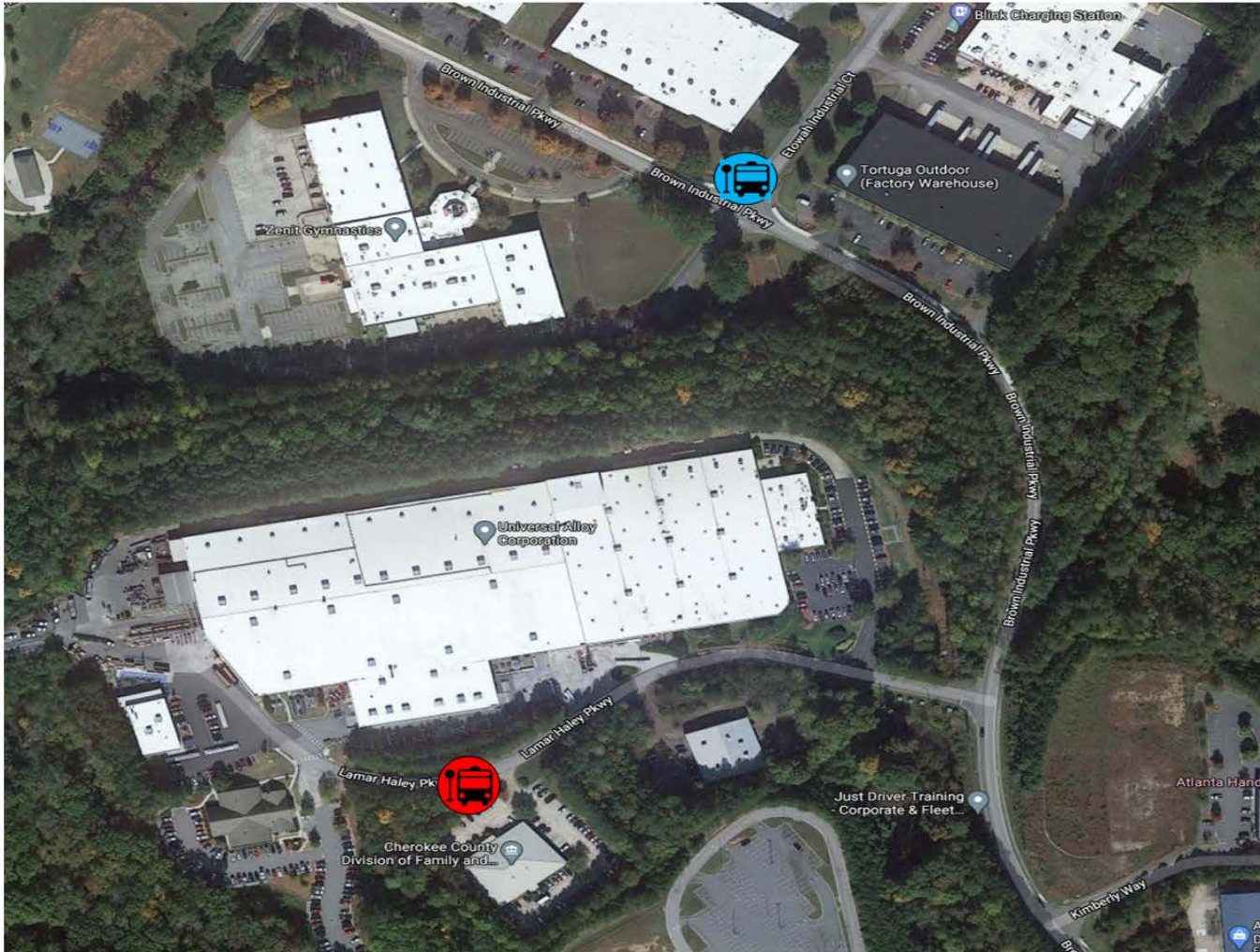
- Blue Dot – Proposed Location
- Details – We have went out several times to this location and we feel this will be the safest location to put this stop for pedestrians and vehicles.
- Justification: Must Ministries is a low income location. Due to several request, we want to add a stop at this location.

#1230 Spring St. (Across from Hampton Inn)



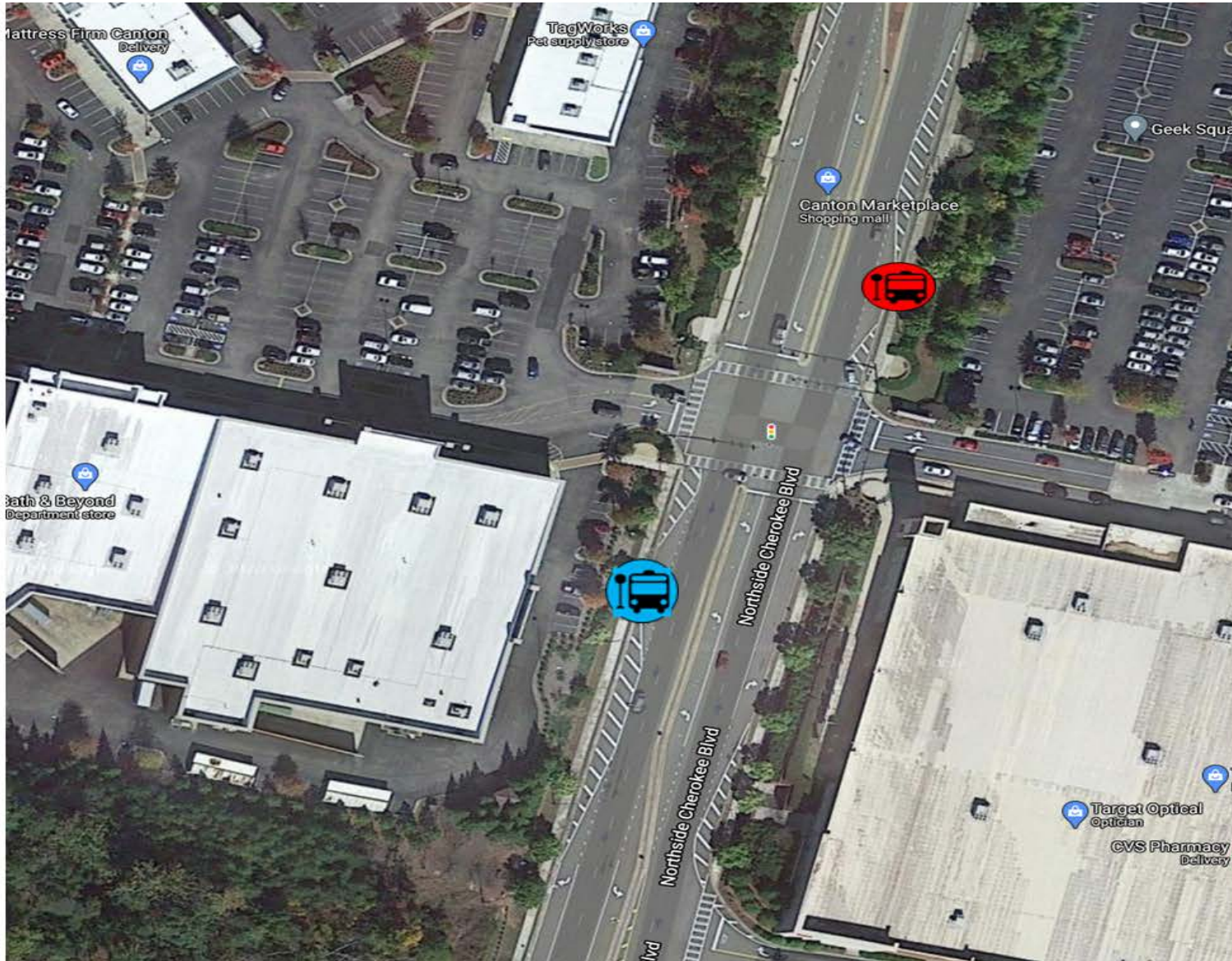
- Red Dot – Current Location
- Blue Dot - Proposed Location
- Details – The majority of the riders that utilize this stop, works at this Hotel.
- Justification: Convenience & Safety

#2040 – Etowah Industrial Ct.



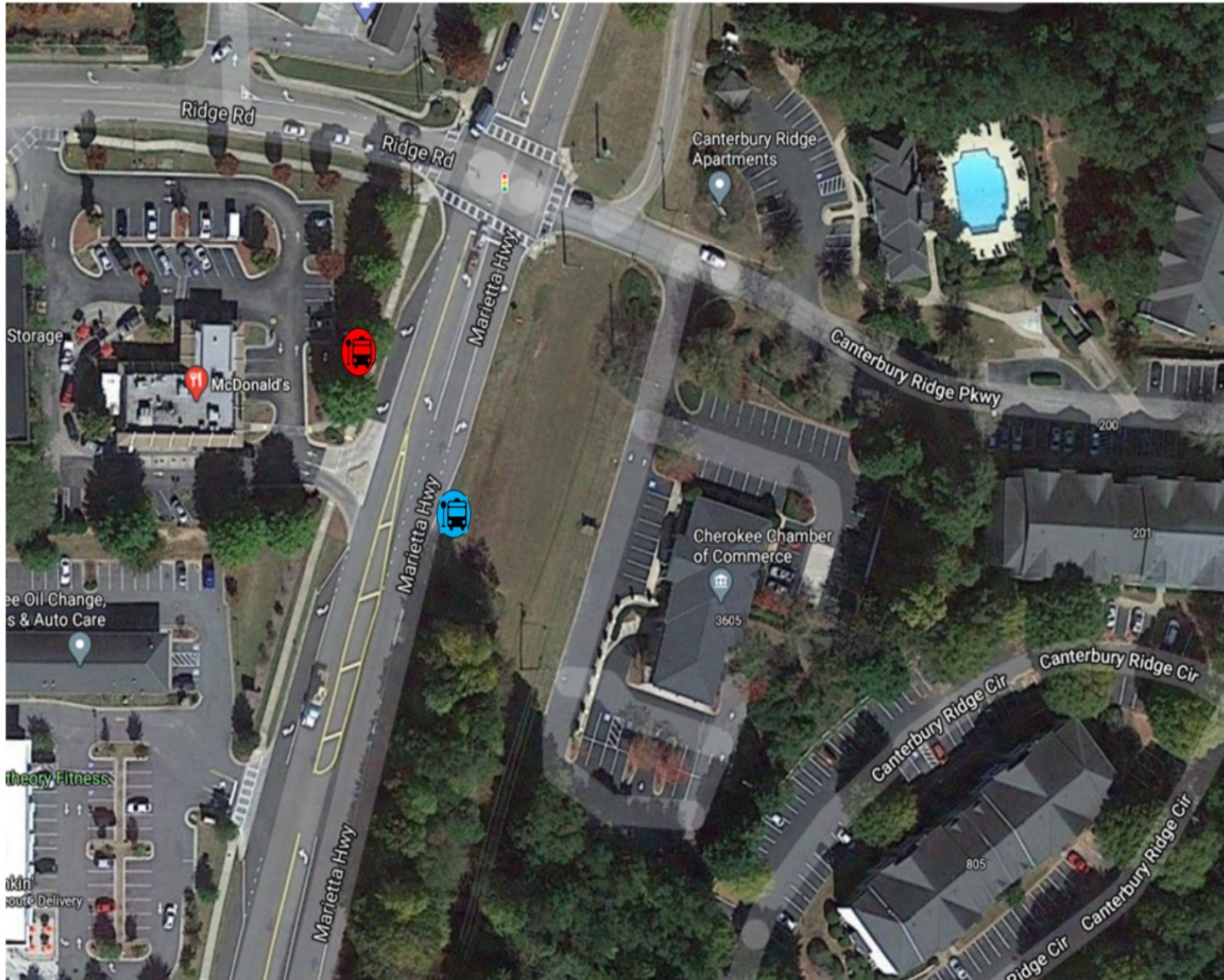
- Red Dot – Current Location
- Blue Dot – Proposed Location
- Details – With DFACS moving the current stop is not being utilized. With moving the stop to Etowah Industrial Ct. this will help the riders that work at Piolax and other businesses in that area.
- Justification – Current stop is not being utilized due to DFACS moving.

#2060 – DICKS Sporting Goods



- Red Dot – Current Location
- Blue Dot – Proposed Location
- Details – Cats re-routed this portion of route(200) to maintain our on-time network and avoid the high volume traffic in this area. We need to move the Target shelter stop across the street to Dicks shelter stop.
- Justification – Safety and on-time network.

#2160 – Chamber of Commerce



- Red Dot – Current Location
- Blue Dot – Proposed Location
- Details – Details – With the changes of the route the travel paths have changed. To stay within the travel path the stop will need to move to Chamber of Commerce right across the street from current stop.
- Justification – Safety and maintain our on-time network.