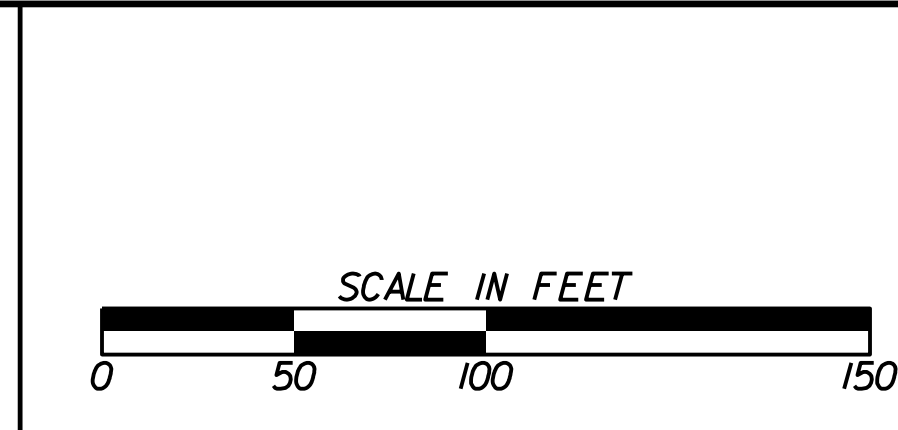




PROPERTY AND EXISTING R/W LINE	
REQUIRED R/W LINE	
CONSTRUCTION LIMITS	
EASEMENT FOR CONSTR & MAINTENANCE OF SLOPES	
EASEMENT FOR CONSTR OF SLOPES	
EASEMENT FOR CONSTR OF DRIVES	

BEGIN LIMIT OF ACCESS.....BLA	
END LIMIT OF ACCESS.....ELA	
REQ'D LIMIT OF ACCESS	
REQ'D LIMIT OF ACCESS & R/W	
PAVEMENT RESURFACING	
FULL DEPTH PAVEMENT CONSTRUCTION	

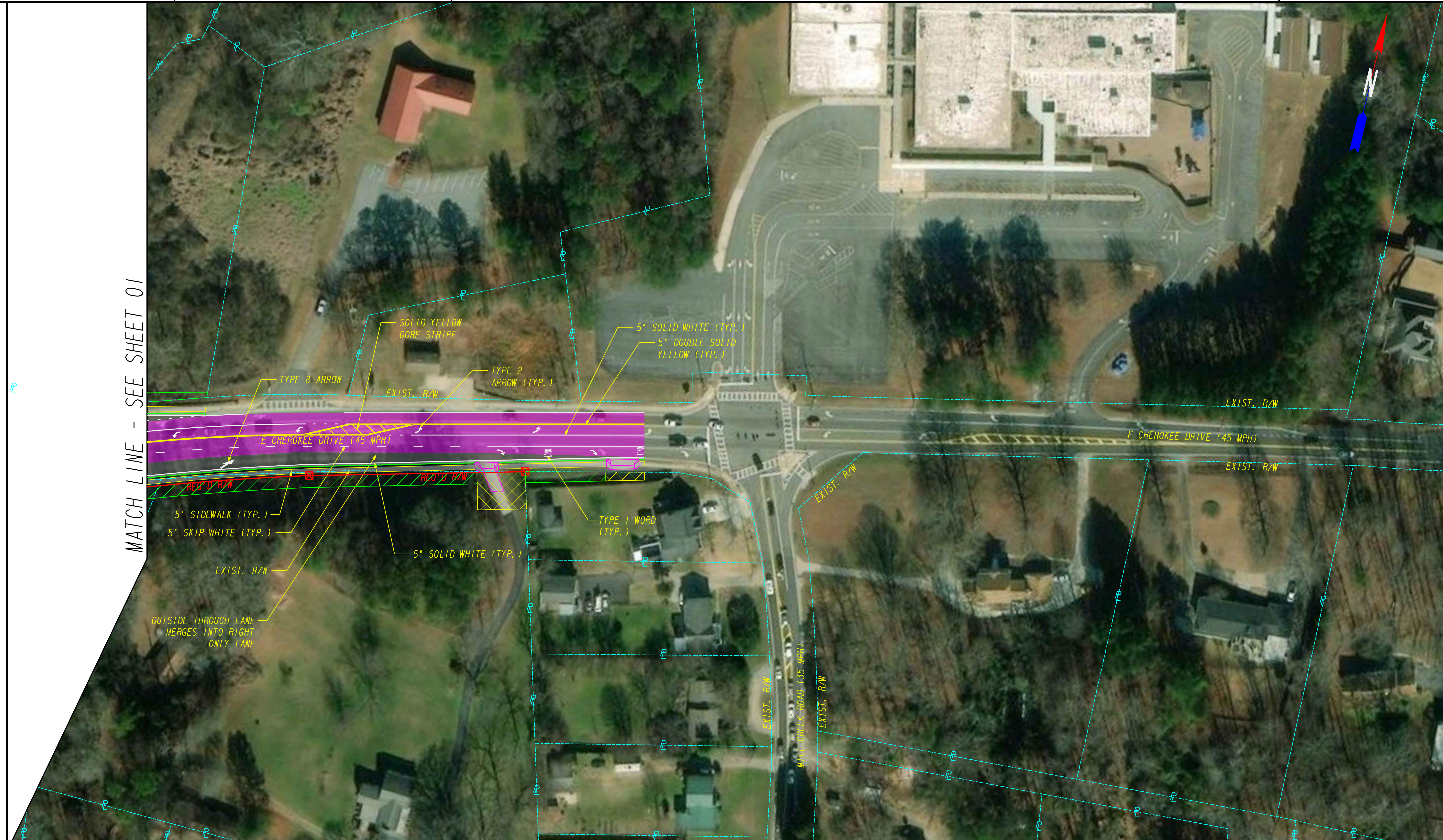
Keck+Wood
COLLABORATION BY DESIGN
3090 Premiere Parkway, Suite 200
Duluth, GA 30097
(678) 417-4000 keckwood.com



REVISION DATES	

CONCEPT LAYOUT
INTERSECTION #9
ALTERNATIVE #1 - HOLLY SPRINGS PARKWAY
@ EAST CHEROKEE DRIVE

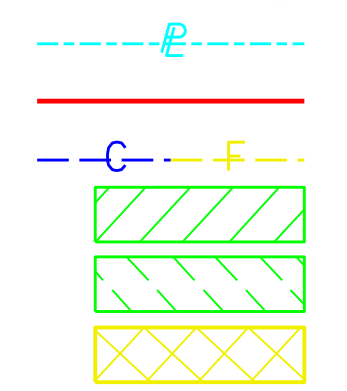
CHECKED:	DATE:	DRAWING No.
BACKCHECKED:	DATE:	01
CORRECTED:	DATE:	
VERIFIED:	DATE:	



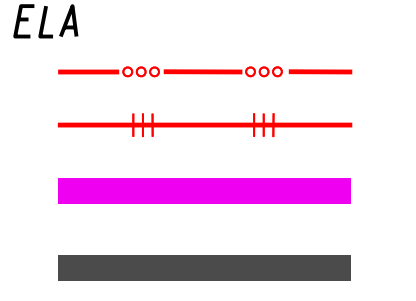
MATCH LINE - SEE SHEET 01



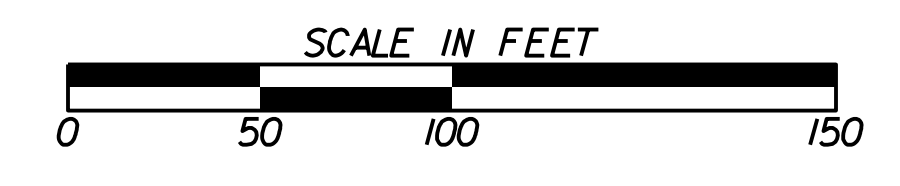
PROPERTY AND EXISTING R/W LINE
 REQUIRED R/W LINE
 CONSTRUCTION LIMITS
 EASEMENT FOR CONSTR
 & MAINTENANCE OF SLOPES
 EASEMENT FOR CONSTR OF SLOPES
 EASEMENT FOR CONSTR OF DRIVES



BEGIN LIMIT OF ACCESS.....BLA
 END LIMIT OF ACCESS.....ELA
 REQ'D LIMIT OF ACCESS
 REQ'D LIMIT OF ACCESS & R/W
 PAVEMENT RESURFACING
 FULL DEPTH PAVEMENT CONSTRUCTION



Keck+Wood
 COLLABORATION BY DESIGN
 3090 Premiere Parkway, Suite 200
 Duluth, GA 30097
 (678) 417-4000 keckwood.com



REVISION DATES		

CONCEPT LAYOUT
 INTERSECTION #9
 ALTERNATIVE #1 - HOLLY SPRINGS PARKWAY
 @ EAST CHEROKEE DRIVE

CHECKED:	DATE:	DRAWING No.
BACKCHECKED:	DATE:	02
CORRECTED:	DATE:	
VERIFIED:	DATE:	