

2009 Future Development Map

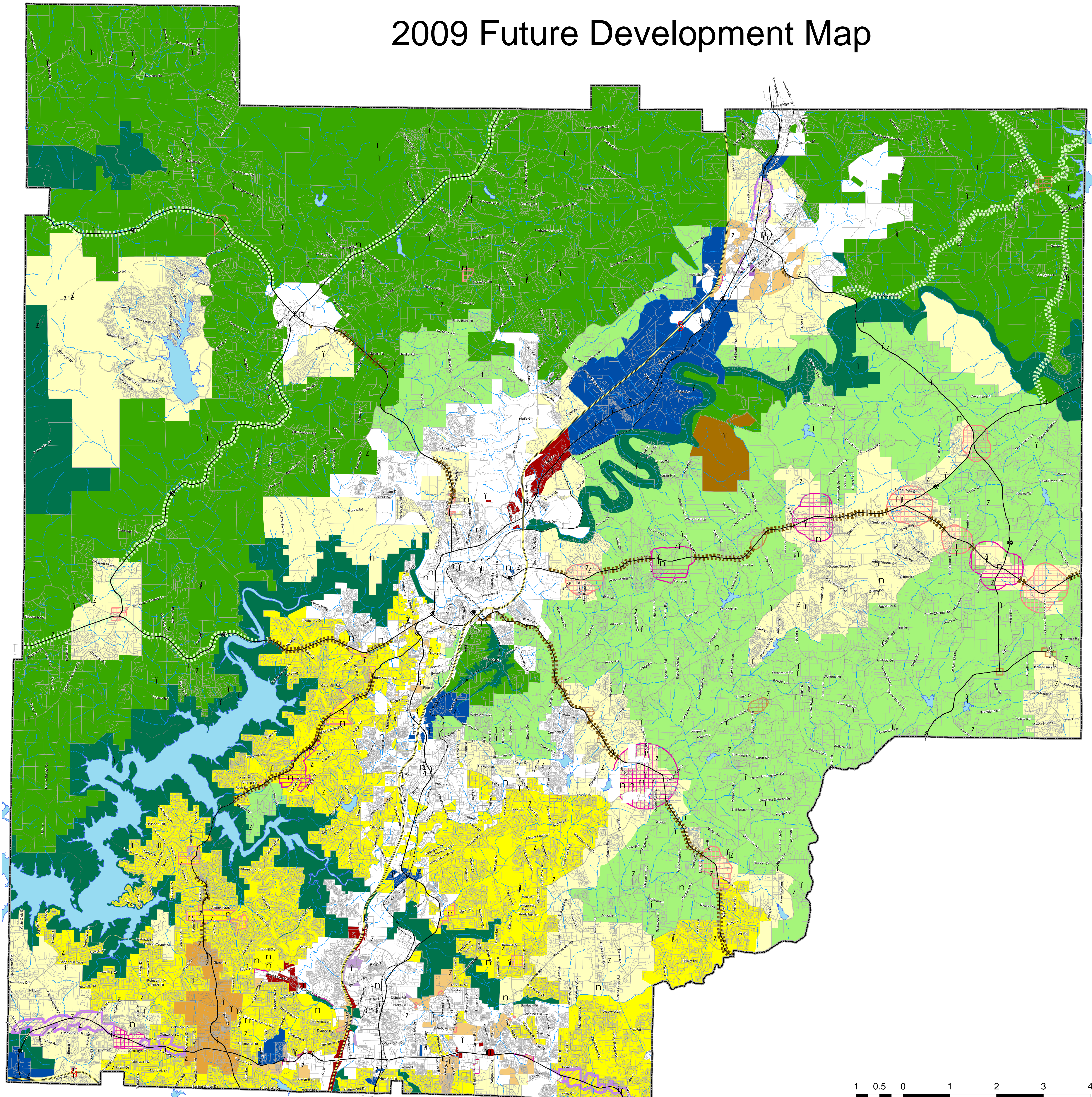


GIS & Mapping

Legend

- Interstates
- Major Highways
- Surface Streets
- Lakes
- Rivers and Streams
- Schools
- Cemeteries
- Churches
- Cellular Towers
- Tax Parcels
- Cherokee County Boundary

- | Development Nodes | Character Areas | Corridors |
|----------------------|------------------------------|--------------|
| County Crossroads | Natural Preserve | Scenic |
| Hamlet | Rural Places | Transitional |
| Neighborhood Village | Country Estates | Development |
| Community Village | Suburban Living | |
| | Neighborhood Living | |
| | Bells Ferry LCI | |
| | Urban Village | |
| | Urban Core | |
| | Regional Center | |
| | Workplace Center | |
| | Transit Oriented Development | |
| | Waste Management | |

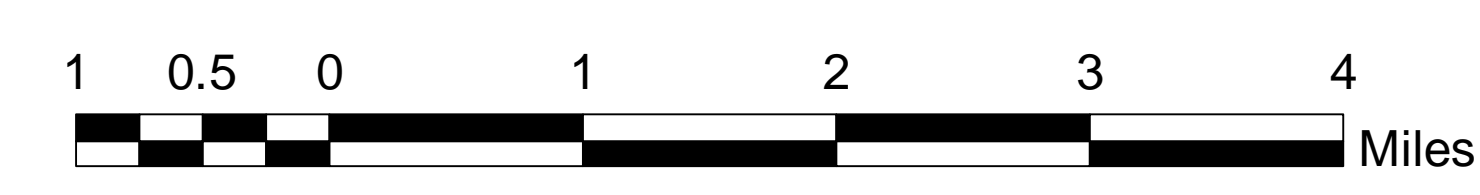
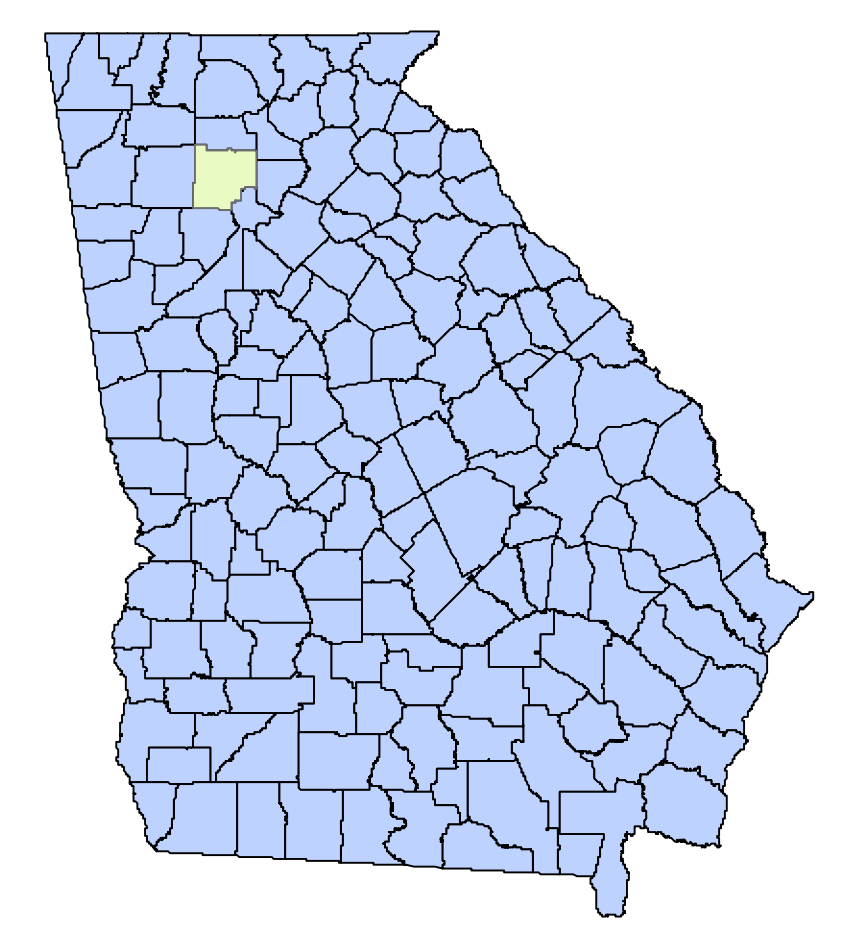


Chairman L.B. Ahrens, Jr.
Approval Signature

Date of Creation
7/1/2009

Produced by:
Cherokee County GIS
1130 Bluffs Parkway
Canton GA 30114

\\Pegasus\GIS\Maps\
Projects\2009OfficialMaps\
2009FutureDevelopment.mxd
Output\2009OfficialMaps\
2009FutureDevelopment.pdf



This Map Has Been Compiled From
The Most Up To Date And Reliable
Sources Available. Cherokee County
Assumes No Responsibility For Errors
Or Omissions Contained Within This Map.
No Warranties or Representations Are
Expressed Or Implied In Fact Or In Law.