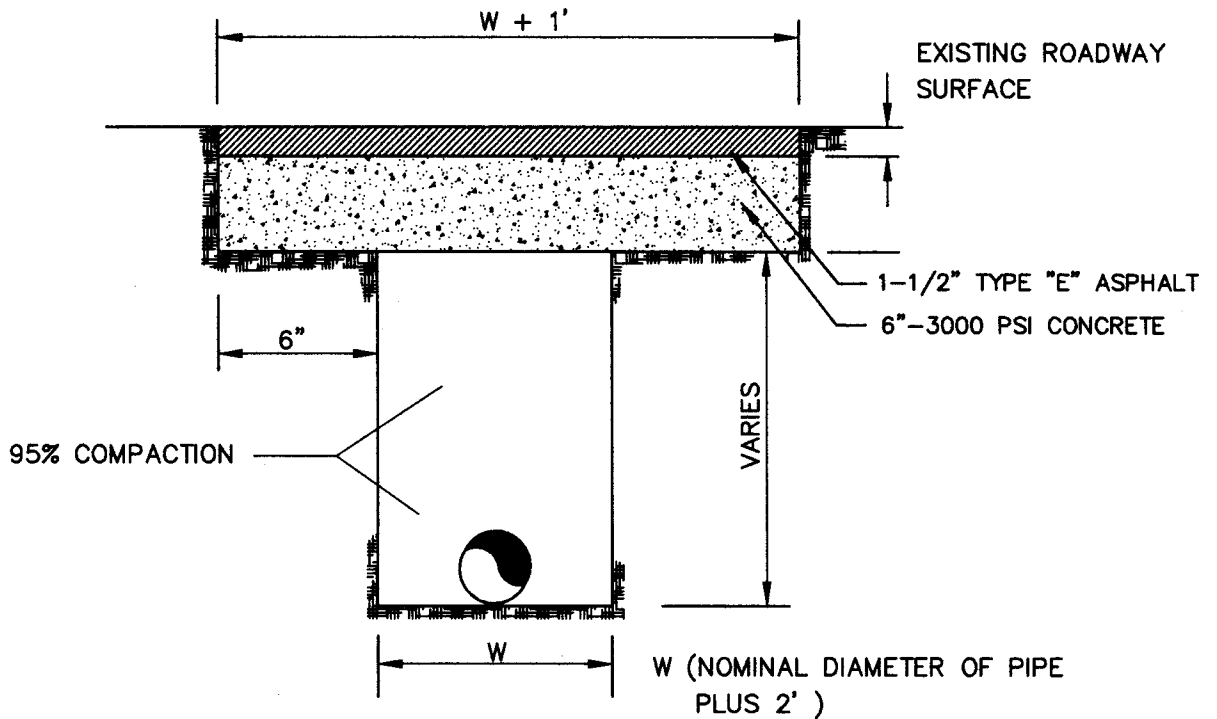


COUNTY ROADS TYPICAL STREET CUT REPAIR



NOTE:

CHEROKEE COUNTY PERMISSION MUST BE OBTAINED TO OPEN CUT EXISTING COUNTY ROADS

ROADWAYS WILL GENERALLY BE BORED OR TUNNELED FROM DITCH LINE TO DITCH LINE

AN 8 INCH LIFT THICKNESS IS REQUIRED WHEN REPAIRING