

**Cherokee County Neighborhood  
Traffic Control Program**

**Cherokee  
County**



**Cherokee County Engineering Department**  
1130 Bluffs Parkway  
Canton, Georgia 30114  
Phone: 678-493-6077 Fax: 678-493-6088

January 2005

**TABLE OF CONTENTS**

<b>TABLE OF CONTENTS</b>	1
<b>1 INTRODUCTION</b>	2
1.1 Purpose	2
1.2 Street Classification	2
1.3 Legal Authority	2
<b>2 REQUIREMENTS</b>	2
2.1 Speed Requirements	2
2.2 MUTCD Multiway Stop Requirements	2
2.3 Additional Multiway Stop Requirements	3
2.4 Additional Speed Hump Requirement	4
2.5 Petition Requirements	4
<b>3 PETITION PROCESS</b>	4
3.1 Interest Letter	4
3.2 Defined Service Area	4
3.3 Traffic Control Petition	5
3.4 Petition Verification	5
3.5 Homeowners Association Approval	6
3.6 Engineering Study	6
3.7 Board of Commissioners Approval	6
3.8 Combination Requests	6
<b>4 CONSIDERATIONS</b>	7
4.1 Multiway Stop Considerations	7
4.2 Speed Hump Considerations	7
<b>APPENDIX</b>	8
A Flowchart of Events	9
B Multiway Stop Petition Cover Letter	10
C Multiway Stop Petition Form	11
D Speed Hump Petition Cover Letter	12
E Speed Hump Petition Form	13
F Combination Petition Cover Letter	14
G Combination Petition Form	15
H Removal Petition Cover Letter	16
I Removal Petition Form	17
J Multiway Stop Detail	18
K Speed Hump Detail	19

## **1 INTRODUCTION**

### **1.1 Purpose**

The Cherokee County Engineering Department has established the Cherokee County Neighborhood Traffic Control Program as a method for neighborhoods to petition the Board of Commissioners with a request for the installation of removal of multiway stops or speed humps. A neighborhood intersection typically will not warrant the Manual on Uniform Traffic Control Devices (MUTCD) criteria for multiway stop installation, therefore this policy will provide an alternative solution for the installation of multiway stops within a neighborhood. When traffic control devices are properly designed and installed, along with strong community support, they are effective at reducing speeds within neighborhoods.

### **1.2 Street Classification**

This program applies only to streets classified as local, residential streets, which are typically defined as subdivision streets with a speed limit of 30 miles per hour or less. Traffic engineering studies may indicate that multiway stops or speed humps would be unnecessary or unsafe at certain locations. Data obtained from traffic engineering studies of physical and traffic related factors should be used in determining where traffic control devices are appropriate.

### **1.3 Legal Authority**

Traffic control devices shall be placed or removed only by the authority of the Board of Commissioners in accordance with Article I, Section 11, of the Cherokee County Code.

## **2 REQUIREMENTS**

### **2.1 Speed Requirements**

Traffic studies must indicate that a speeding problem exists, based on the standard of an 85<sup>th</sup> percentile speed of at least 11 miles per hour over the posted speed limit. Installing traffic control devices with an 85<sup>th</sup> percentile below speed criteria does not meet generally accepted cost/benefit ratios and is not recommended.

### **2.2 MUTCD Multiway Stop Requirements**

In keeping with the general recommendation of the Manual on Uniform Traffic Control Devices (MUTCD), uniformity aids in the recognition and understanding of traffic control devices. Strict adherence to the standards and guidelines outlined in this manual will help ensure that any given multiway stop installation will be equally recognizable and require the same action on the part of the motorists regardless of where it is encountered. The following is the MUTCD criteria that is considered for the installation of multiway stop control:

- A. Where traffic control signal are justified, the multiway stop is an interim measure that can be installed quickly to control traffic while arrangements are being made for the installation of the traffic control signal.
- B. A crash problem, as indicated by 5 or more reported crashes in a 12-month period that are susceptible to correction by a multiway stop installation. Such crashes include right- and left-turn collisions as well as right angle collisions.
- C. Minimum Volumes:
  - 1. The vehicular volume entering the intersection from the major street approach (total of both approaches) averages at least 300 vehicles per hour for any 8 hours of an average day, and
  - 2. The combined vehicular, pedestrian, and bicycle volume entering the intersection from the minor street approaches (total of both approaches) averages at least 200 units per hour for the same 8 hours, with an average delay to minor-street vehicular traffic of at least 30 seconds per vehicle during the highest hour, but
  - 3. If the 85<sup>th</sup>-percentile approach speed of the major-street traffic exceeds 40 miles per hour, the minimum vehicular volume warrants are 70 percent of the above values.
- D. Where no single criterion is satisfied, but where Criteria B, C.1, and C.2 are all satisfied to 80 percent of the minimum values. Criterion C.3 is excluded from this condition.

If it is determined by the Engineering Department that the MUTCD criteria could be met, then the staff will investigate. Most residential neighborhoods will not satisfy the MUTCD requirements; therefore the Engineering Department has developed alternate procedures.

### *2.3 Additional Multiway Stop Requirements*

In addition to the MUTCD requirements, the following criteria should also be considered when selecting intersections for multiway stop applications:

- The presence of any non-removable sight obstruction problem at the intersection may necessitate the need to immediately install a multiway stop.
- The vehicular volume from either approach on the non-stopped street should not exceed five times the vehicular volume from any one approach on the existing stopped street.
- To prevent excessive stopping, multiway stop locations should not be located within 800 feet of each other.
- On intersections requested for multiway stops, the side street should be at least 400 feet in length.

#### 2.4 *Additional Speed Hump Requirements*

In addition to speed requirements, the following criteria should also be considered when selecting locations for speed humps:

- Speed hump applications typically require two humps to be installed for effective speed control.
- Speed humps will be installed at a spacing of 250-750 feet depending on the location.
- No speed humps will be installed within 250 feet of a multiway stop controlled intersection and 100 feet of an uncontrolled intersection.
- No speed humps will be installed on streets less than 500 feet in length.
- Speed humps will be located near property lines and not to conflict with drainage features, driveways, utilities, or severe horizontal or vertical curves.

#### 2.5 *Petition Requirements*

The Engineering Department has established a petition process that allows neighborhood residents to request traffic control devices to be installed at a location that does not satisfy the MUTCD requirements. All locations will be evaluated by the Engineering Department and only those that meet the requirements in Section 2.1 and Section 2.3 thru Section 2.4 set forth in this manual will be recommended to the Board of Commissioners for approval. The petition process is described in detail in the following section.

## **3 PETITION PROCESS**

### 3.1 *Interest Letter*

A letter must be received from a citizen requesting that a traffic control devices be installed or removed at one or more specific locations within a subdivision. Once the letter has been received, a copy of the Cherokee County Neighborhood Traffic Control Program will be sent to the requesting citizen as well as the homeowner's association if one exists.

### 3.2 *Defined Service Area*

A map of the defined service area will be included when the Cherokee County Neighborhood Traffic Control Program is sent to the citizen. This map shows all property owners that have frontage on the effected streets. Side streets that intersect with streets proposed to have traffic control devices such that vehicles entering/exiting will cross the traffic control devices will also be included within the defined service area. For a subdivision not completely built out, a minimum of 30% of the total units, including future undeveloped units within the defined service area, must be occupied before a petition for the installation or removal of traffic control devices will be considered. If upon investigation signature requirements for a portion of a street and/or side street are undecided, the matter will be brought before the County Attorney for resolution.

### *3.3 Traffic Control Petition*

The Engineering Department will forward the Cherokee County Neighborhood Traffic Control Program manual, a map of the defined service area, and the petition forms to the requesting citizen. A properly executed petition is a generally accepted form of public action to show support of the installation or removal of traffic calming devices. The following rules and requirements, which will be included with the petition forms, help ensure the fairness and integrity of the petition process:

- The objective of the Cherokee County Neighborhood Traffic Control Program is to provide property owners a process to request traffic control devices on County maintained roads, where engineering studies indicate that their use would meet the desired results of reducing neighborhood speeds and their installation is favored by a majority of the property owners in the area.
- The appropriate petition must be used for the installation of specific traffic control device, or a combination of devices. The petition forms are located in the appendix of this manual.
- To have traffic control devices installed in Cherokee County, a petition must be submitted to the Engineering Department. All of the property owners in the subdivision or defined service area should be contacted and given an opportunity to sign this petition, indicating their response of "YES" or "NO" concerning the installation or removal of the traffic control devices. Unless property is undergoing a change of ownership, a spouse's signature will not be acceptable if she is not the legal owner. If both husband and wife are joint legal owners, both signatures are required. A "Mr. and Mrs." signature is not acceptable. All owners must sign individually. This includes owners of undeveloped lots. Property owners that own more than one parcel within the defined service area will only be allowed one vote. Renting tenants are not an acceptable substitute for the legal homeowner. No signature will be withdrawn from the petition after it is filed with the Engineering Department.
- The time span from receiving the petition to installation or removal of traffic control devices will be approximately four months or less if approved.

### *3.4 Petition Verification*

The completed petition must be signed, notarized and then returned to the Engineering Department, where it will be checked against tax records and land lot maps to ensure that it meets all requirements. The purpose of the witness' signature is to verify the signatures of the property owners, if in question. The percentages will be calculated, based on individual lots where owners sign affirmatively, divided by the total number of lots in the platted subdivision, units, or defined service area. Each lot counts as only one vote, regardless of the number of owners signing. At least **70%** of the homeowners must vote in favor of or oppose the traffic control devices installation or removal, before petitions can be presented to the Board of Commissioners. It will be returned to the sender if it does not meet the requirements.

### *3.5 Homeowners Association Approval*

Cherokee County requires that for subdivisions with homeowners associations, the homeowners association must vote for and approve the installation of traffic control devices. This action must take place after the petition is verified by the Engineering Department and before the completion of an engineering study. The homeowners association must approve the installation of traffic control devices, and send a certified letter to confirm the approval to the Engineering Department. The certified letter from the homeowners association must include acknowledgement of any liability created by the installation of traffic control devices, and an agreement to share in any potential liability. The letter should list the locations requested for traffic control devices that will be evaluated by the Engineering Department. The homeowners association should give consideration to the requirements defined in Section 2 when selecting locations for traffic control devices.

### *3.6 Engineering Study*

Upon receiving the completed petition and homeowners association approval, the Engineering Department will conduct an engineering study to determine if the locations meet the requirements in Section 2 of this manual. A report will be produced explaining the results of the study. If the locations meet the requirements defined by Section 2.1 and Section 2.3 thru Section 2.4 of this manual, the request for traffic control devices will be placed on the Board of Commissioners agenda for the next available meeting.

The Engineering Department recommends limiting the use of traffic control devices on residential streets to locations where excessive speeding can be documented. However, the property owners may choose to participate in the neighborhood traffic control program if requirements are not met. A waiver of the requirements for intersections that do not meet Section 2.1 and Section 2.3 thru Section 2.4 will be considered if **90%** of the homeowners in the defined service area support the traffic control devices via the petition.

### *3.7 Board of Commissioners Approval*

The Board of Commissioners will receive a copy of the request letter, signed petition, homeowners association letter, and engineering study for the requested traffic control device application. This will be placed on the agenda for the next available Board of Commissioners meeting where they will have the authority to approve or deny the request.

### *3.8 Combination Requests*

Communities that request multiway stops in combination with speed humps should follow the procedure set forth in this manual. A special petition cover letter and petition sheet is included in this manual that must be used for this specific request. The petition sheet is labeled clearly that it is for the installation of multiway stops and speed humps. Also the letter from the homeowners association must include the request for multiway stops and speed humps.

## 4 CONSIDERATIONS

### 4.1 *Multiway Stop Considerations*

It is perceived that multiway stop control will be the solution to traffic problems, there are concerns that a neighborhood must consider prior to the installation of multiway stop control at an intersection. These following considerations are from the study "Multiway Stops – The MUTCD is Correct!" by W. Martin Bretherton Jr. from the 1999 ITE Annual Meeting Compendium. They are as follows:

- Multiway Stop Control is not a speed control device. Stop signs can reduce speeds within a few hundred feet of an intersection, but may increase mid-block speeds as drivers attempt to make up the lost time due to the stop.
- Multiway Stop Control will not significantly reduce the vehicular volume along a roadway.
- Excessive sign usage can cause disrespect for all traffic signs. When motorists perceive a sign as not serving a useful purpose, the respect for the sign and officials approving and installing the sign is diminished.
- If motorists perceive that the all-way stop control is not warranted based on traffic volumes, the level of non-compliance for the stop signs will increase.
- Pedestrians and other motorists can gain a false sense of security by assuming all motorists will stop.
- Accidents at the intersection can increase due to the multiway stop control application.
- Tire and engine noise increases in the area of the intersection due to vehicles stopping and accelerating. Also the amount of exhaust in the vicinity of the intersection will increase.

### 4.2 *Speed Hump Considerations*

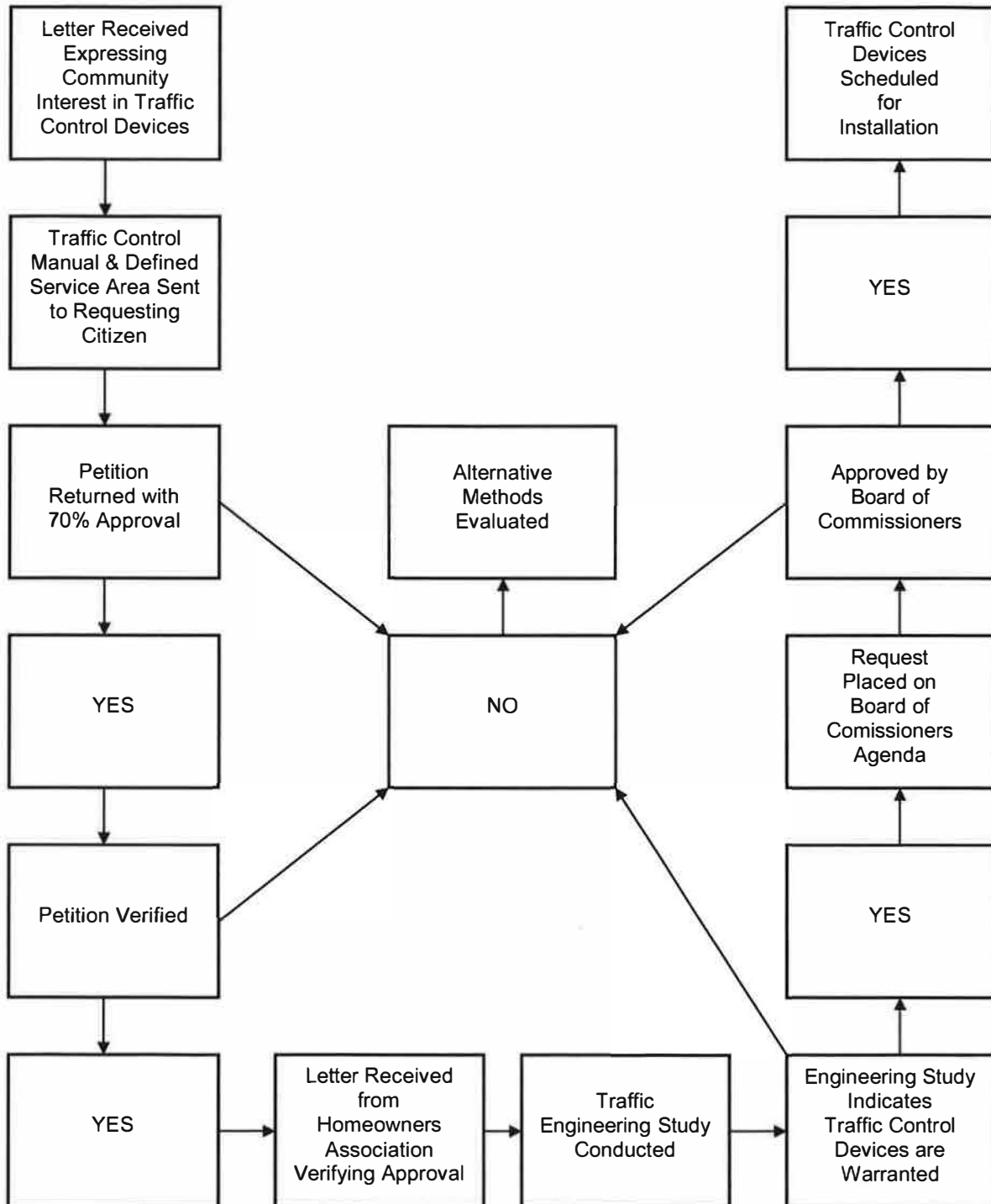
While it is proven that speed humps can lower speeds within a neighborhood, there are some factors that need to be considered if they are installed. They are as follows:

- Residents living near speed humps must tolerate increased noise levels as vehicles traverse speed humps day and night.
- Traffic may be diverted to previously quiet parallel streets in the neighborhood.
- Emergency service response time suffers.
- Speed humps interfere with street repaving, decreasing the effectiveness of both the speed hump and the new pavement surface.
- Speed humps block the flow of drainage water on some streets and can cause flooding problems.
- Speed humps require signing and striping, which some residents consider unattractive.



**APPENDIX**

Appendix A – Flowchart of Events



**Appendix B – Multiway Stop Petition Cover Letter**

Cherokee County Engineering Department  
ATTN: Neighborhood Traffic Control Program  
1130 Bluffs Pkwy.  
Canton, Georgia 30114

**PETITION FOR MULTIWAY STOPS**

WE THE UNDERSIGNED, ALL BEING PROPERTY OWNERS OF THE SUBDIVISION LEGALLY TITLED " \_\_\_\_\_ ", UNIT(S) \_\_\_\_\_, DO HEREBY PETITION THROUGH OUR SUBDIVISION OR UNIT(S) FOR INSTALLATION OF MULTIWAY STOPS.

THERE ARE \_\_\_\_\_ NUMBER OF LOTS CURRENTLY EXISTING IN " \_\_\_\_\_ " AND EACH OWNER AS SHOWN ON THE TAX RECORDS HAS AFFIRMATIVELY SIGNED THIS PETITION OR THEIR INDICATION FOR DISAPPROVAL IS NOTED HEREIN.

THIS PETITION REPRESENTS \_\_\_\_\_% OR MORE OF THE PROPERTY OWNERS OF THIS SUBDIVISION TO BE AFFECTED JOIN IN THIS REQUEST.

**\*SPECIAL NOTE\***

YOUR SIGNATURE ON THIS PETITION INDICATES THAT YOU HAVE READ AND FULLY UNDERSTAND ALL INFORMATION CONCERNING THE NEIGHBORHOOD TRAFFIC CONTROL PROGRAM.

Personally appeared before me a Notary Public, the undersigned affiant, who says an oath that \_\_\_\_\_ is one of the subscribing witnesses to the within instrument; that each of said witnesses say the execution and delivery of the same by each grantor therein for the purpose set forth; and that each of said witnesses signed the same purported.

Sworn to and Subscribed before me,  
this \_\_\_\_\_ day of \_\_\_\_\_, 20\_\_\_\_

\_\_\_\_\_  
Subscribing Witness

Notary Public  
Cherokee County, State of Georgia

**\*\*Note: This form is to request the installation of multiway stops only.\*\***

**Appendix C – Multiway Stop Petition Form**

CHEROKEE COUNTY NEIGHBORHOOD TRAFFIC CONTROL PROGRAM: \_\_\_\_\_  
 SUBDIVISION NAME: \_\_\_\_\_

**Signing this petition certifies that you have read and understand the Neighborhood Traffic Control Program. Circle YES in support, NO if against, and signature must be as it appears on tax bill.**

1.	_____	<b>YES</b>	<b>NO</b>	Lot Number _____
	<i>Signature</i>			
	_____			_____
	<i>Print Name (Last, First)</i>			<i>Witness Signature</i>
2.	_____	<b>YES</b>	<b>NO</b>	Lot Number _____
	_____			_____
3.	_____	<b>YES</b>	<b>NO</b>	Lot Number _____
	_____			_____
4.	_____	<b>YES</b>	<b>NO</b>	Lot Number _____
	_____			_____
5.	_____	<b>YES</b>	<b>NO</b>	Lot Number _____
	_____			_____
6.	_____	<b>YES</b>	<b>NO</b>	Lot Number _____
	_____			_____
7.	_____	<b>YES</b>	<b>NO</b>	Lot Number _____
	_____			_____
8.	_____	<b>YES</b>	<b>NO</b>	Lot Number _____
	_____			_____
9.	_____	<b>YES</b>	<b>NO</b>	Lot Number _____
	_____			_____
10.	_____	<b>YES</b>	<b>NO</b>	Lot Number _____
	_____			_____

**\*\*Note: This form is to request the installation of multiway stops only.\*\***

Page \_\_\_\_\_ of \_\_\_\_\_

**Appendix D – Speed Hump Petition Cover Letter**

Cherokee County Engineering Department  
ATTN: Neighborhood Traffic Control Program  
1130 Bluffs Pkwy.  
Canton, Georgia 30114

**PETITION FOR SPEED HUMPS**

WE THE UNDERSIGNED, ALL BEING PROPERTY OWNERS OF THE SUBDIVISION LEGALLY TITLED " \_\_\_\_\_ ", UNIT(S) \_\_\_\_\_, DO HEREBY PETITION THROUGH OUR SUBDIVISION OR UNIT(S) FOR INSTALLATION OF SPEED HUMPS.

THERE ARE \_\_\_\_\_ NUMBER OF LOTS CURRENTLY EXISTING IN " \_\_\_\_\_ " AND EACH OWNER AS SHOWN ON THE TAX RECORDS HAS AFFIRMATIVELY SIGNED THIS PETITION OR THEIR INDICATION FOR DISAPPROVAL IS NOTED HEREIN.

THIS PETITION REPRESENTS \_\_\_\_\_% OR MORE OF THE PROPERTY OWNERS OF THIS SUBDIVISION TO BE AFFECTED JOIN IN THIS REQUEST.

**\*SPECIAL NOTE\***

YOUR SIGNATURE ON THIS PETITION INDICATES THAT YOU HAVE READ AND FULLY UNDERSTAND ALL INFORMATION CONCERNING THE NEIGHBORHOOD TRAFFIC CONTROL PROGRAM.

Personally appeared before me a Notary Public, the undersigned affiant, who says an oath that \_\_\_\_\_ is one of the subscribing witnesses to the within instrument; that each of said witnesses say the execution and delivery of the same by each grantor therein for the purpose set forth; and that each of said witnesses signed the same purported.

Sworn to and Subscribed before me,  
this \_\_\_\_\_ day of \_\_\_\_\_, 20\_\_

\_\_\_\_\_  
Subscribing Witness

Notary Public  
Cherokee County, State of Georgia

**\*\*Note: This form is to request the installation of speed humps only.\*\***

**Appendix E – Speed Hump Petition Form**

CHEROKEE COUNTY NEIGHBORHOOD TRAFFIC CONTROL PROGRAM: \_\_\_\_\_  
SUBDIVISION NAME: \_\_\_\_\_

**Signing this petition certifies that you have read and understand the Neighborhood Traffic Control Program. Circle YES in support, NO if against, and signature must be as it appears on tax bill.**

1. _____ <i>Signature</i>	YES	NO	Lot Number _____
_____			
_____			
_____			
2. _____	YES	NO	Lot Number _____
_____			
_____			
3. _____	YES	NO	Lot Number _____
_____			
_____			
4. _____	YES	NO	Lot Number _____
_____			
_____			
5. _____	YES	NO	Lot Number _____
_____			
_____			
6. _____	YES	NO	Lot Number _____
_____			
_____			
7. _____	YES	NO	Lot Number _____
_____			
_____			
8. _____	YES	NO	Lot Number _____
_____			
_____			
9. _____	YES	NO	Lot Number _____
_____			
_____			
10. _____	YES	NO	Lot Number _____
_____			
_____			

**\*\*Note: This form is to request the installation of speed humps only.\*\***

**Appendix F – Combination Petition Cover Letter**

Cherokee County Engineering Department  
ATTN: Neighborhood Traffic Control Program  
1130 Bluffs Pkwy.  
Canton, Georgia 30114

**PETITION FOR MULTIWAY STOPS AND SPEED HUMPS**

WE THE UNDERSIGNED, ALL BEING PROPERTY OWNERS OF THE SUBDIVISION LEGALLY TITLED " \_\_\_\_\_ ", UNIT(S) \_\_\_\_\_, DO HEREBY PETITION THROUGH OUR SUBDIVISION OR UNIT(S) FOR INSTALLATION OF MULTIWAY STOPS AND SPEED HUMPS.

THERE ARE \_\_\_\_\_ NUMBER OF LOTS CURRENTLY EXISTING IN " \_\_\_\_\_ " AND EACH OWNER AS SHOWN ON THE TAX RECORDS HAS AFFIRMATIVELY SIGNED THIS PETITION OR THEIR INDICATION FOR DISAPPROVAL IS NOTED HEREIN.

THIS PETITION REPRESENTS \_\_\_\_\_% OR MORE OF THE PROPERTY OWNERS OF THIS SUBDIVISION TO BE AFFECTED JOIN IN THIS REQUEST.

**\*SPECIAL NOTE\***

YOUR SIGNATURE ON THIS PETITION INDICATES THAT YOU HAVE READ AND FULLY UNDERSTAND ALL INFORMATION CONCERNING THE NEIGHBORHOOD TRAFFIC CONTROL PROGRAM.

Personally appeared before me a Notary Public, the undersigned affiant, who says an oath that \_\_\_\_\_ is one of the subscribing witnesses to the within instrument; that each of said witnesses say the execution and delivery of the same by each grantor therein for the purpose set forth; and that each of said witnesses signed the same purported.

Sworn to and Subscribed before me,  
this \_\_\_\_\_ day of \_\_\_\_\_, 20\_\_\_\_

\_\_\_\_\_  
Subscribing Witness

Notary Public  
Cherokee County, State of Georgia

**\*\*Note: This form is to request the installation of multiway stops and speed humps.\*\***

**Appendix G – Combination Petition Form**

CHEROKEE COUNTY NEIGHBORHOOD TRAFFIC CONTROL PROGRAM: \_\_\_\_\_  
SUBDIVISION NAME: \_\_\_\_\_

**Signing this petition certifies that you have read and understand the Neighborhood Traffic Control Program. Circle YES in support, NO if against, and signature must be as it appears on tax bill.**

1.	_____	<b>YES</b>	<b>NO</b>	Lot Number _____
	<i>Signature</i>			
	_____			
	<i>Print Name (Last, First)</i>			<i>Witness Signature</i>
	_____			_____
2.	_____	<b>YES</b>	<b>NO</b>	Lot Number _____
	_____			
3.	_____	<b>YES</b>	<b>NO</b>	Lot Number _____
	_____			
4.	_____	<b>YES</b>	<b>NO</b>	Lot Number _____
	_____			
5.	_____	<b>YES</b>	<b>NO</b>	Lot Number _____
	_____			
6.	_____	<b>YES</b>	<b>NO</b>	Lot Number _____
	_____			
7.	_____	<b>YES</b>	<b>NO</b>	Lot Number _____
	_____			
8.	_____	<b>YES</b>	<b>NO</b>	Lot Number _____
	_____			
9.	_____	<b>YES</b>	<b>NO</b>	Lot Number _____
	_____			
10.	_____	<b>YES</b>	<b>NO</b>	Lot Number _____
	_____			

**\*\*Note: This form is to request the installation of multiway stops and speed humps.\*\***



**Appendix H – Removal Petition Cover Letter**

Cherokee County Engineering Department  
ATTN: Neighborhood Traffic Control Program  
1130 Bluffs Pkwy.  
Canton, Georgia 30114

**PETITION FOR REMOVAL OF TRAFFIC CONTROL DEVICES**

WE THE UNDERSIGNED, ALL BEING PROPERTY OWNERS OF THE SUBDIVISION LEGALLY TITLED " \_\_\_\_\_ ", UNIT(S) \_\_\_\_\_, DO HEREBY PETITION THROUGH OUR SUBDIVISION OR UNIT(S) FOR REMOVAL OF TRAFFIC CONTROL DEVICES.

THERE ARE \_\_\_\_\_ NUMBER OF LOTS CURRENTLY EXISTING IN " \_\_\_\_\_ " AND EACH OWNER AS SHOWN ON THE TAX RECORDS HAS AFFIRMATIVELY SIGNED THIS PETITION OR THEIR INDICATION FOR DISAPPROVAL IS NOTED HEREIN.

THIS PETITION REPRESENTS \_\_\_\_\_% OR MORE OF THE PROPERTY OWNERS OF THIS SUBDIVISION TO BE AFFECTED JOIN IN THIS REQUEST.

**\*SPECIAL NOTE\***

YOUR SIGNATURE ON THIS PETITION INDICATES THAT YOU HAVE READ AND FULLY UNDERSTAND ALL INFORMATION CONCERNING THE NEIGHBORHOOD TRAFFIC CONTROL PROGRAM.

Personally appeared before me a Notary Public, the undersigned affiant, who says an oath that \_\_\_\_\_ is one of the subscribing witnesses to the within instrument; that each of said witnesses say the execution and delivery of the same by each grantor therein for the purpose set forth; and that each of said witnesses signed the same purported.

Sworn to and Subscribed before me,  
this \_\_\_\_\_ day of \_\_\_\_\_, 20\_\_

\_\_\_\_\_  
Subscribing Witness

Notary Public  
Cherokee County, State of Georgia

**\*\*Note: This form is to request the removal of traffic control devices.\*\***

**Appendix G – Removal Petition Form**

CHEROKEE COUNTY NEIGHBORHOOD TRAFFIC CONTROL PROGRAM: \_\_\_\_\_  
SUBDIVISION NAME: \_\_\_\_\_

**Signing this petition certifies that you have read and understand the Neighborhood Traffic Control Program. Circle YES in support, NO if against, and signature must be as it appears on tax bill.**

1. _____ <i>Signature</i>	<b>YES</b> <b>NO</b> Lot Number _____
_____	_____
_____	_____
_____	_____
2. _____	<b>YES</b> <b>NO</b> Lot Number _____
_____	_____
_____	_____
_____	_____
3. _____	<b>YES</b> <b>NO</b> Lot Number _____
_____	_____
_____	_____
_____	_____
4. _____	<b>YES</b> <b>NO</b> Lot Number _____
_____	_____
_____	_____
_____	_____
5. _____	<b>YES</b> <b>NO</b> Lot Number _____
_____	_____
_____	_____
_____	_____
6. _____	<b>YES</b> <b>NO</b> Lot Number _____
_____	_____
_____	_____
_____	_____
7. _____	<b>YES</b> <b>NO</b> Lot Number _____
_____	_____
_____	_____
_____	_____
8. _____	<b>YES</b> <b>NO</b> Lot Number _____
_____	_____
_____	_____
_____	_____
9. _____	<b>YES</b> <b>NO</b> Lot Number _____
_____	_____
_____	_____
_____	_____
10. _____	<b>YES</b> <b>NO</b> Lot Number _____
_____	_____
_____	_____
_____	_____

**\*\*Note: This form is to request the removal of traffic control devices.\*\***